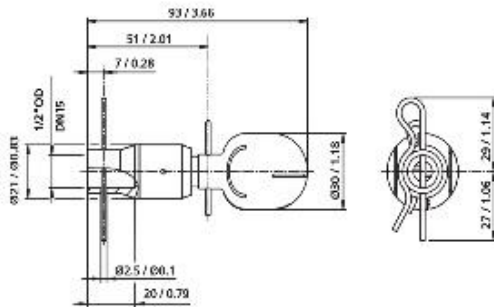


SPRAY BALL ROTATIVO TURBO SSB 40 (316L)

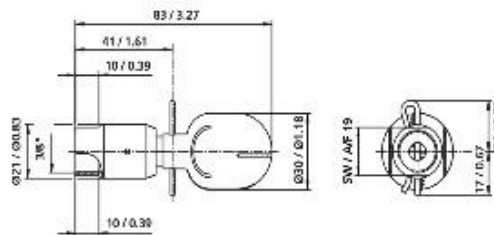


Pin Fix

BSP/NPT



Pin Fix

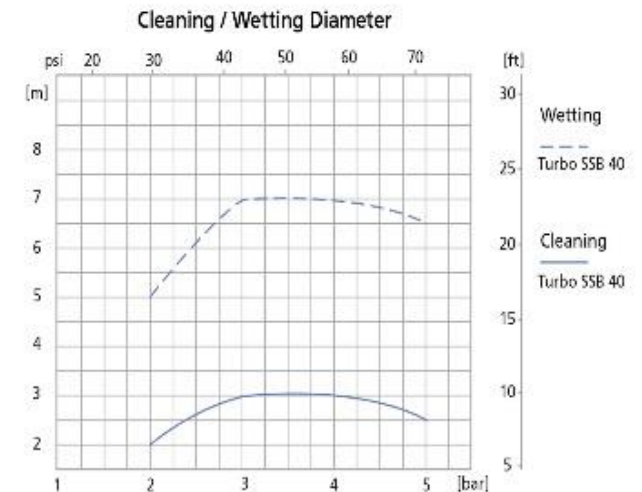
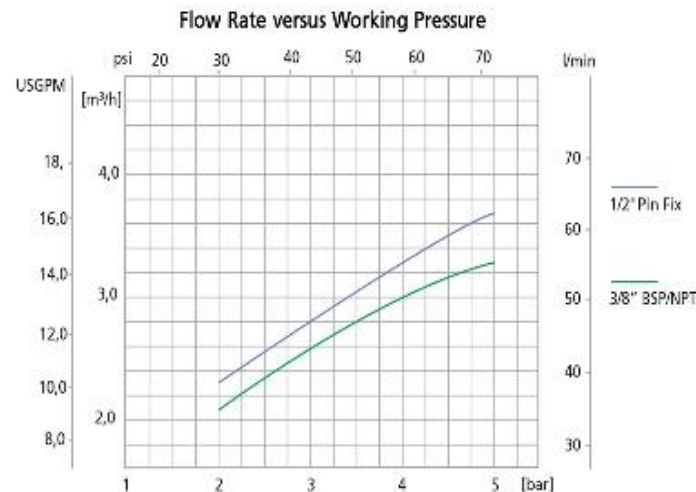


Female thread

Dimensions (mm / inch)

Working pressure:	2 - 5 bar (29 - 72.5 psi)
Cleaning diameter:	max. 3 m (9.8 ft)
Flow rate:	2.1 - 3.7 m ³ /h (38.3 - 61.7 l/min / 10.1 - 16.3 USgpm)
Spray angle:	360°
Operating temperature:	max. 90 °C (194 °F)
Ambient temperature/SIP:	max. 140 °C (284 °F), 30 min
Insertion opening:	BSP/NPT min. Ø 38 mm (1.5 inch) min. / Pin Fix Ø 57 mm (2.24 inch)
Materials:	stainless steel 316L (1.4404) with C-PTFE or PTFE
Preferred mounting position:	vertical down

Version	Part number	Version	Part number
3/8" BSP female / C-PTFE	4660-2556-113	Pin Fix for 1/2" OD pipe (12.7 x 1.6 mm) / C-PTFE	4660-2557-413
3/8" BSP female / PTFE	4660-2555-112	Pin Fix for 1/2" OD pipe (12.7 x 1.6 mm) / PTFE	4660-2561-412
3/8" NPT female / C-PTFE	4660-2558-213	Pin Fix for DN 15 pipe (19 x 1.5 mm) / C-PTFE	4660-2557-419
3/8" NPT female / PTFE	4660-2558-212	Pin Fix for DN 15 pipe (19 x 1.5 mm) / PTFE	4660-2561-419

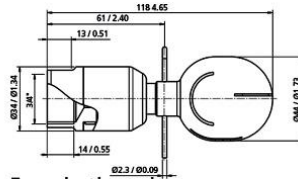


SPRAY BALL ROTATIVO TURBO SSB 75 (T316L)

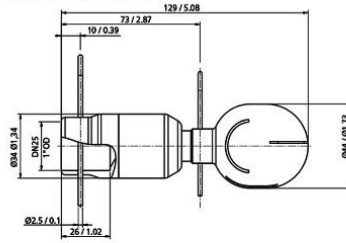


Turbo SSB 75 Pin Fix

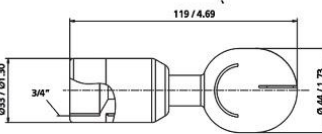
Turbo SSB 75 CS
BSP/NPT



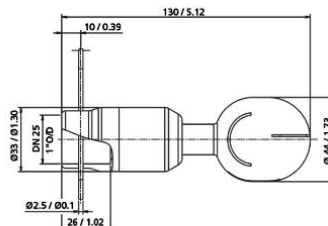
Female thread



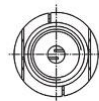
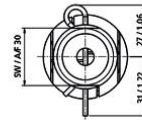
Pin Fix



CS Female thread



CS Pin Fix

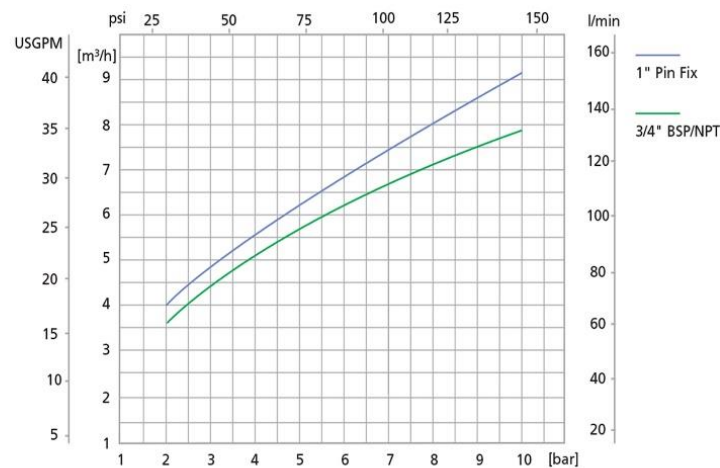


Working pressure:	2 - 10 bar (29 - 145 psi)
Cleaning diameter:	max. 4.7 m (15.4 ft)
Flow rate:	3.6 - 9.2 m ³ /h (60 - 153.3 l/min / 15.85 - 40.5 USgpm)
Spray angle:	360°
Operating temperature:	max. 90 °C (194 °F)
Ambient temperature/SIP:	max. 140 °C (284 °F), 30 min
Insertion opening:	Turbo SSB 75 BSP/NPT min. 60 mm (2.36 inch) / Pin Fix min. Ø 90 mm (3.54 inch) Turbo SSB 75 CS BSP/NPT min. 45 mm (1.77 inch) / PinFix min. Ø 90 mm (3.54 inch)
Materials:	stainless steel 316L (1.4404) with C-PTFE or PTFE
Preferred mounting position:	vertical down

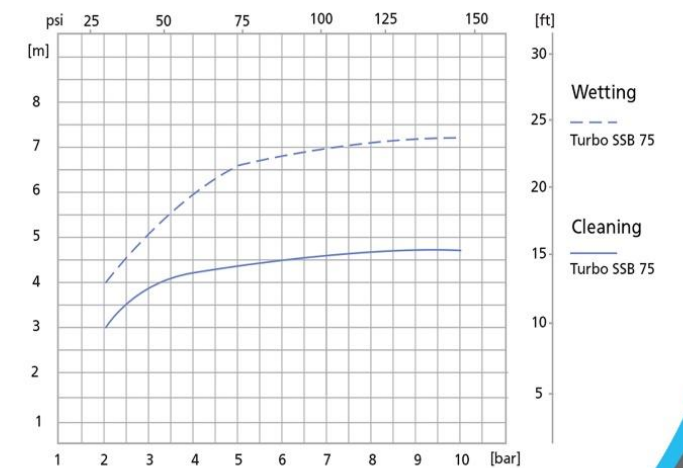
Version	Part number
3/4" BSP female / C-PTFE	4660-2337-113
3/4" BSP female / PTFE	4660-2336-112
3/4" NPT female / C-PTFE	4660-2341-213
3/4" NPT female / PTFE	4660-2346-212
Pin Fix for 1" OD (25.4 x 1.6 mm) pipe / C-PTFE	4660-2342-413
Pin Fix for 1" OD (25.4 x 1.6 mm) pipe / PTFE	4660-2347-412
Pin Fix for DN 25 (29 x 1.5 mm) pipe / C-PTFE	4660-2558-413
Pin Fix for DN 25 (29 x 1.5 mm) pipe / PTFE	4660-2558-414

Version	Part number
3/4" BSP female / C-PTFE CS	4660-2558-421
3/4" BSP female / PTFE CS	4660-2558-418
3/4" NPT female / C-PTFE CS	4660-2558-422
3/4" NPT female / PTFE CS	4660-2558-424
Pin Fix for 1" OD (25.4 x 1.6 mm) pipe / C-PTFE CS	4660-2558-423
Pin Fix for 1" OD (25.4 x 1.6 mm) pipe / PTFE CS	4660-2558-425
Pin Fix for DN 25 (29 x 1.5 mm) pipe / C-PTFE CS	4660-2558-420
Pin Fix for DN 25 (29 x 1.5 mm) pipe / PTFE CS	4660-2558-419

Dimensions (mm / inch)
Flow Rate versus Working Pressure



Cleaning / Wetting Diameter

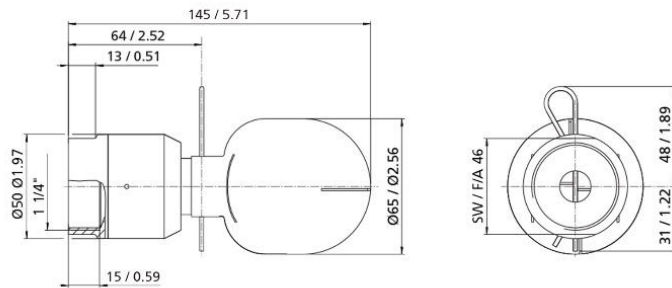


SPRAY BALL ROTATIVO TURBO SSB 125 (316L)



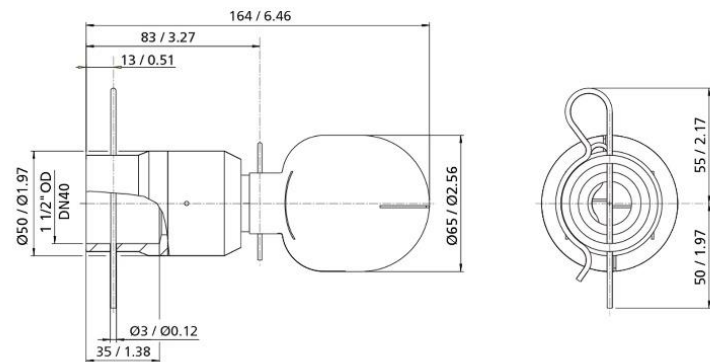
Pin Fix

BSP/NPT



Female thread

Dimensions (mm / inch)



Pin Fix

	Turbo SSB 125
Working pressure:	2 - 6 bar (29 - 87 psi)
Cleaning diameter:	max. 10 m (32.8 ft)
Flow rate:	12 - 24.5 m ³ /h (200 - 408.3 l/min / 52.8 - 107.9 USgpm)
Spray angle:	360°
Operating temperature:	max. 90 °C (194 °F)
Ambient temperature/SIP:	max. 140 °C (284 °F), 30 min
Insertion opening:	BSP/NPT min. 90 mm (3.54 inch) / PinFix min. Ø 110 mm (4.33 inch)
Materials:	stainless steel 316L (1.4404) with C-PTFE or PTFE

Preferred mounting position: vertical down

Version	Part number	Version	Part number
1 1/4" BSP female / C-PTFE	4660-2451-113	Pin Fix for 1 1/2" OD (38.1 x 1.6 mm) pipe / C-PTFE	4660-2452-413
1 1/4" BSP female / PTFE	4660-2448-112	Pin Fix for 1 1/2" OD (38.1 x 1.6 mm) pipe / PTFE	4660-2454-412
1 1/4" NPT female / C-PTFE	4660-2558-417	Pin Fix for DN 40 (41 x 1.5 mm) pipe / C-PTFE	4660-2558-415
1 1/4" NPT female / PTFE	4660-2453-212	Pin Fix for DN 40 (41 x 1.5 mm) pipe / PTFE	4660-2558-416

